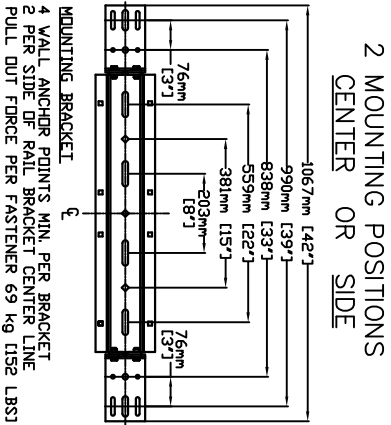
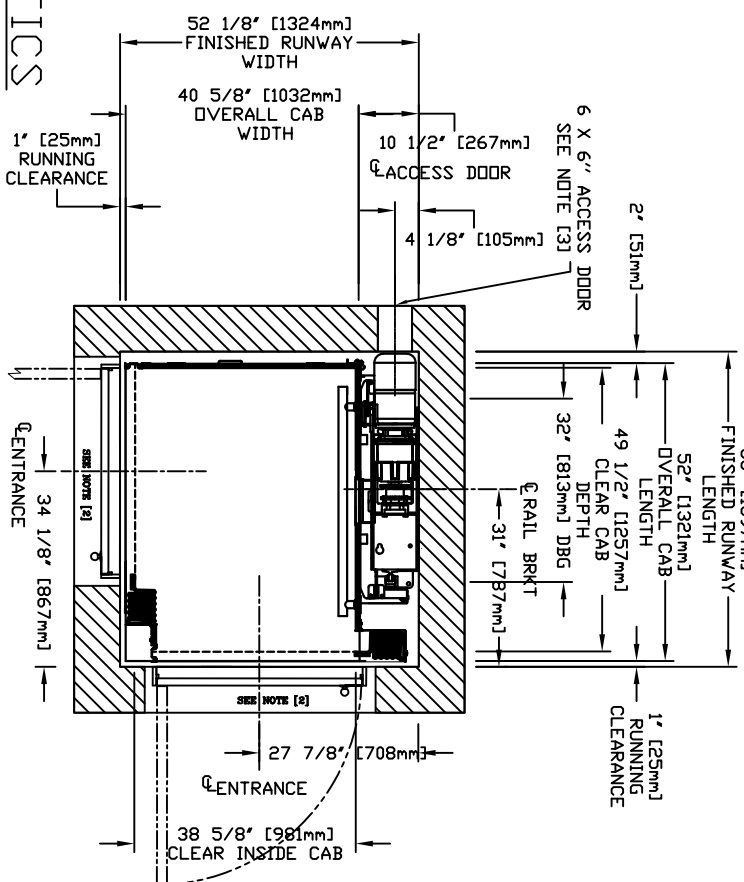
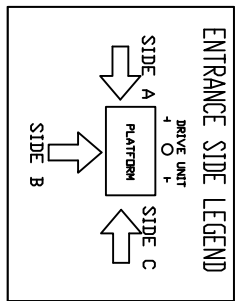


**FORCES**

RAIL FORCES	
* R1	* R2
1382 kg [154 lb]	882 kg [96 lb]
1304 kg [144 lb]	1194 kg [132 lb]
RAIL ASSY: 845 kg [186 lb]	
WEIGHT: 180 kg / ft [43 lb / ft]	
PIT FLOOR TO SUPPORT LOAD (INCLUDES IMPACT): 2909 kg [6400 lbs]	



FINAL RAIL BRACKET	THE MOTOR CONCORD REPRESENTATIVE FOR EXACT R331 LOCATION
INTERMEDIATE RAIL BRACKET	32\" [813mm] INTERVALS AFTER 2nd BOTTOM BRACKET
BOTTOM RAIL BRACKET	44\" [1118mm] & 71\" [1804mm] ABOVE PIT FLOOR

**CHARACTERISTICS**

**GENERAL**

APPLIED CODE: \_\_\_\_\_

CAPACITY: \_\_\_\_\_ (750, 1000 LBS)

NOMINAL SPEED: \_\_\_\_\_ 40 FPM

TRAVEL: \_\_\_\_\_

PIT DEPTH: \_\_\_\_\_ (MIN. 6')

**CAR DETAILS**

CAB PANEL SELECTION: \_\_\_\_\_ (SEE CHART)

CEILING SELECTION: \_\_\_\_\_ (WITH MATCH)

CAB FLOORING: \_\_\_\_\_ (PLYW, FINISH)

FINISHED FLOOR THICKNESS: \_\_\_\_\_ (1/8 TO 3/4\")

CAB HEIGHT: \_\_\_\_\_ (80, 96\")

CAB OPERATION: \_\_\_\_\_ (AUTO)

GATE TYPE: \_\_\_\_\_ (V/FOLD, CFOLD, CAB SILL, PFOLD CLR, PFOLD BRZ, BLK SCZR)

**LOCKS/CALL STATIONS/TRAVEL/DOORS(BY OTHERS)**

	LANDING 1	LANDING 2	LANDING 3	LANDING 4
TRAVEL	PIT			
ENTRANCE SIDE	SIDE			
DOOR SWING				
LOOK TYPE				
AUTO DOOR OP.				

**STANDARD OPTIONS PROVIDED**

BUTTON MARKING: NUMERIC (1 to 4)

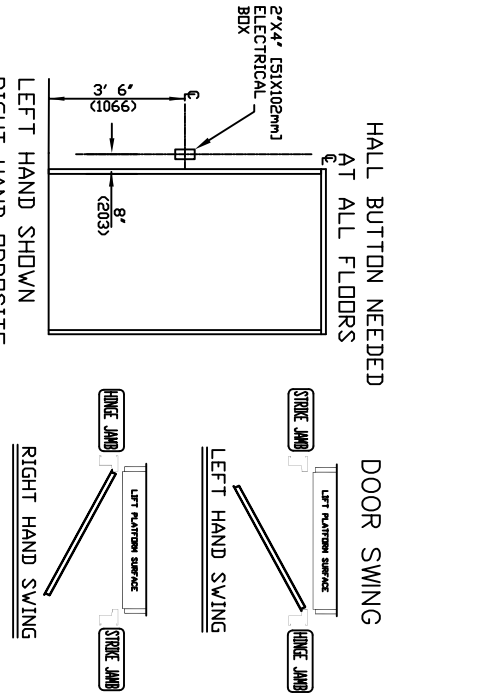
HALL CALL FINISH: NO

HALL CALL FINISH: MATCH CAR STATION

HALL CALL SHAPE: RECTANGULAR

PREWIRE PACKAGE: ND

CONTROLLER LOCATION: EXTERNAL



**DRIVE UNIT**

DRIVE ASSEMBLY MFR: CONCORD

MOTOR: 2.0 HP/1660 RPM W/Broke

GEAR MODEL: 42171 Ratio Gear Box

MOTOR CONTROLLER: Pre-programmed VF Drive

SUSPENSION

TYPE: DUAL #60 ROLLER CHAIN

CONSTRUCTION: ANSI B291

NOMINAL STRENGTH: 9020 LBS PER CHAIN

ELECTRICAL

POWER SUPPLY: 60 Hz/1 Phase/230 volt

**RESIDENTIAL ELEVATOR**

ECLIPSE MODEL 36X48 TYPE 3